
NEWS & VIEWS



VOLUME XXXVIII

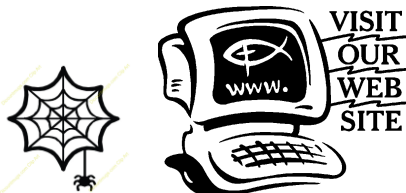
Number 05



Bulletin items should be turned into Pastor by Wednesday of each week. Pastor's email address is lseafert@gmail.com. **News & Views articles** are due on the 20th of each month. Please put them in the tray labeled "Secretary" located on the information desk in the foyer of the church or send your News & Views articles to Brenda Rivet by email at bsrivet@yahoo.com.

Thank you,

Brenda Rivet
Church Secretary
671-1182



Church website: saintbartskawkawlin.com.

School website:

www.saintbartskawkawlin.com/school.

SCHOOL NEWS

We will be having our own field day at our school on Friday, May 18th starting at around 12:45 pm. Grades 1-8 will be competing in the annual Garber Field Day on Friday, May 25th. We will not be having school on Monday, May 28th, because of the Memorial Day holiday. Our closing service will take place on Thursday, May 31st, at church beginning at 6:00 pm. The final day of school will be on Friday, June 1st. Students will receive their report cards on Friday. School will dismiss at 11:00 am on that day.

We are happy to announce that Bethany Hilgendorf has accepted the call to be our new Kindergarten teacher for the upcoming school year. We are accepting applications for students of Preschool age to Grade Eight for the fall. We will be offering preschool for 4 year olds on Mondays, Wednesdays, and Fridays from 8:20 am – 11:20 am and preschool for 3 year olds on Tuesdays and Thursdays from 8:20 am – 11:20 am. We will also be offering all day preschool for 4 year olds on Monday, Wednesday, and Fridays. Please contact Principal Mark Boileau or

Preschool teacher Kate Wakefield at school 684-6751 for more information or you may get applications off of our school website by visiting www.saintbartskawkawlin.com.

In Service to Our Lord,
Mark Boileau, Principal

PARSONAGE REPAIRS

As you may be aware there is a fund drive in progress for repairs to the parsonage. A member has offered to match up to \$5000 in donations. It has been noted in the past that this type of fund raising works well with a designated time frame. That being said, the offer of matching funds will be from now until June 4th. Every dollar will help with this project, your support will be greatly appreciated.

Thank you

MEMORIALS

In loving memory of Irene McDonald, a gift was given to the General Fund by Kathy McDonald and to the School Endowment Fund by Ed & Lillian Hitz.

In loving memory of Rose Marie Rahn, gifts were given to the Worker Training Fund by Sam & Carol Hacker and Tim Lisius and to the General Fund by Roger & Dorothy Felske.

In loving memory of Noreen Schuchardt, gifts were given to the General Fund by Robert & Betty Davies, Dinah Horning, Doug & Gail Anderson, Linda Gilbert, Frank & Chantal Gilbert, Nancy Leinberger, Diane & Dennis Swincicki, Rick & Karen Wlock, Jerry & Janet Paze, Elsie Dietlein, Lee Blohm, Helen Steih, Kevin & Kim Bublitz, Tom & Loretta Schindler, Penny & Wayne Ott, Connie Brayer, Alice Nitschka, Ruth & Gary Rowden, and Roger & Dorothy Felske. Gifts were given

to the Help Thy Brethren Fund by Scott & Barb Rahn and Tom & Mary Kleinert. Gifts were given to the School Endowment Fund by Ed & Lillian Hitz, to the Ladies Aid by Roger & Judy Ricker, to the Stain Glass Fund by Gladys Krueger and Sandy Tesvedos (Kaylee & Alexa), and to the Worker Training Fund by Sam & Carol Hacker and Tim Lisius.

In loving memory of Gary Peil, a gift was given to the Help Thy Brethren Fund by Phyllis Peil.

HYMN SOFT

May 6	9am - Irving 7pm - O'Brien
May 13	9am organ - Dennings 7pm- organ -Dennings
May 20	9am Rivet 7pm Schwab
May 27	9am organ - O'Brien 7pm organ - O'Brien

USHERS SCHEDULE

May 6	9:00AM Tim Lisius - Mel Kruse
May 13	9:00AM Jim Eckinger - Al Lisius
May 20	9:00AM Larry Badgero - Don Krueger
May 27	9:00AM Mike Ott - Lyle McNally



Our shut-in members are those who are for any length of time – and in most cases, permanently – unable to attend our weekly worship or our celebration of the Lord’s Supper. They are served, then, with recordings of our services and with private communion from the pastors. Please be sure to inform the pastors of any of our members who become needful of these services, and especially be sure to remember all our shut-ins with your prayers and correspondence – and even better yet, with a personal visit now and then. *Please refer to your hard copy of the News and Views for our current Shut In members*